

Circulation Heaters

Mounting Options

Figure 4
Vertical Wall Mounting

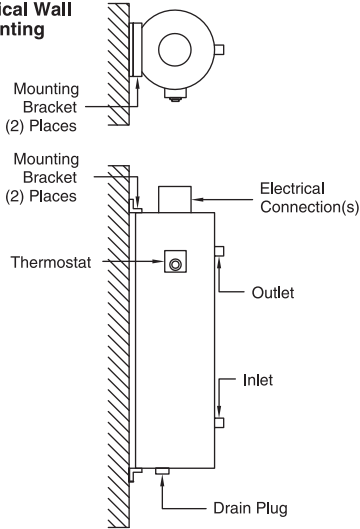


Figure 6
Horizontal Wall Mounting

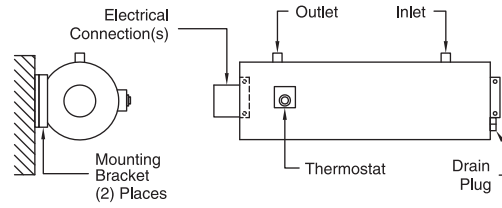


Figure 5
Vertical Floor Mounting

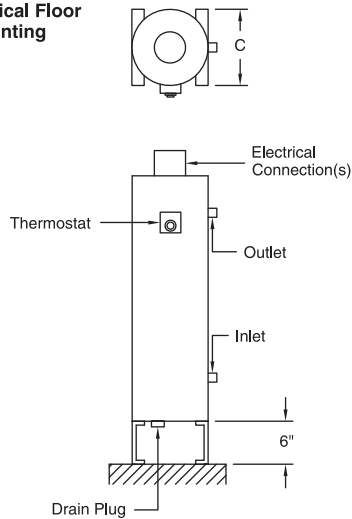


Figure 7
Horizontal Floor Mounting

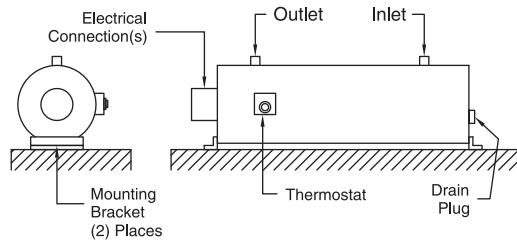
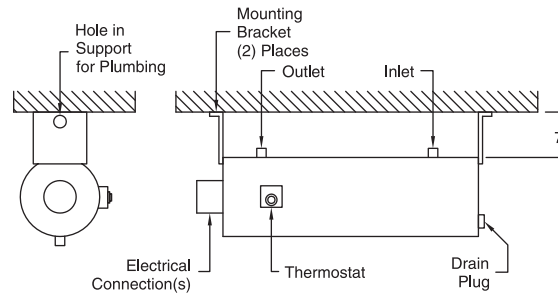
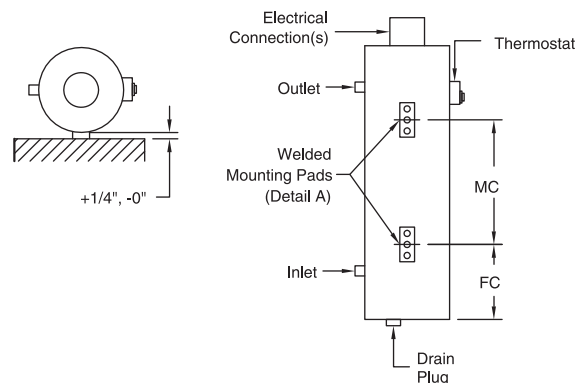


Figure 8
Horizontal Ceiling Mounting

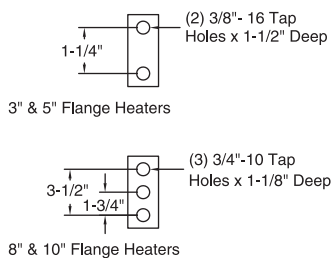


Not available for 8" flange heaters and larger.

Figure 9
Mounting Pads



Detail A



Not available for 10" flange heaters and larger.
Note: Thermostat must always be in a vertical position.
Specify if horizontal heater mounting is required.